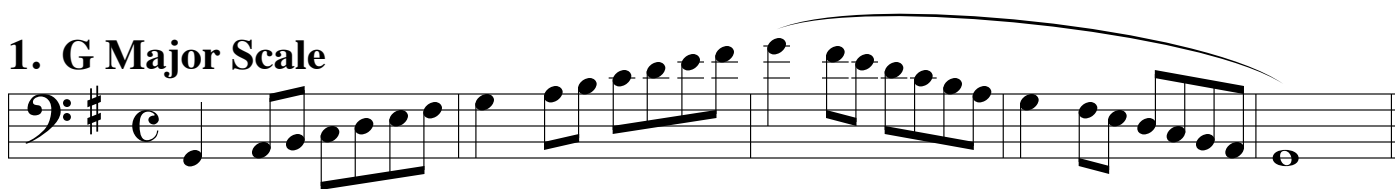


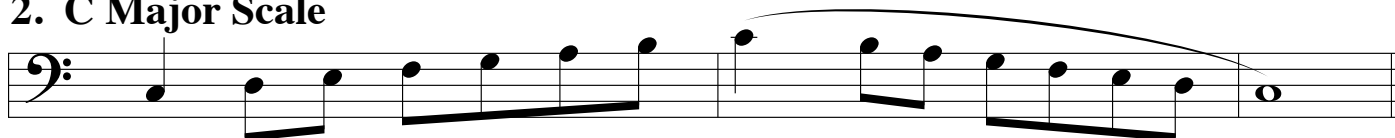
# ATSSB Trombone Scales

Scales should be performed as written and may or may not be performed connected. All scales are to be played at a minimum of  $\text{♩} = 120$ .  
Scales should be performed in order without delay between scales.

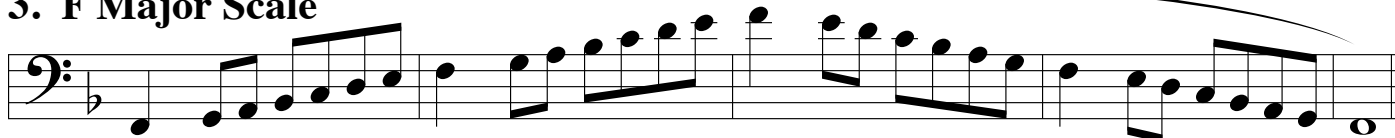
## 1. G Major Scale



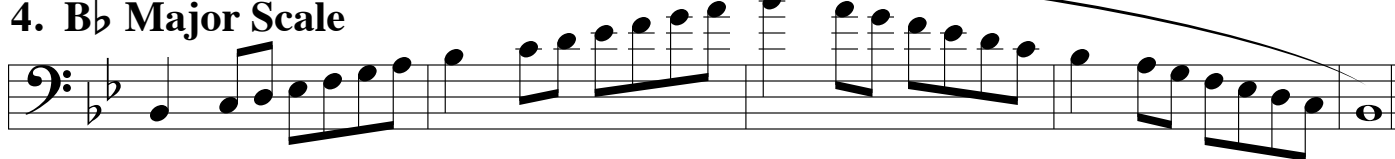
## 2. C Major Scale



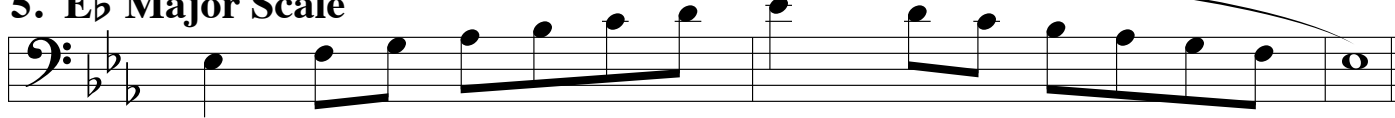
## 3. F Major Scale



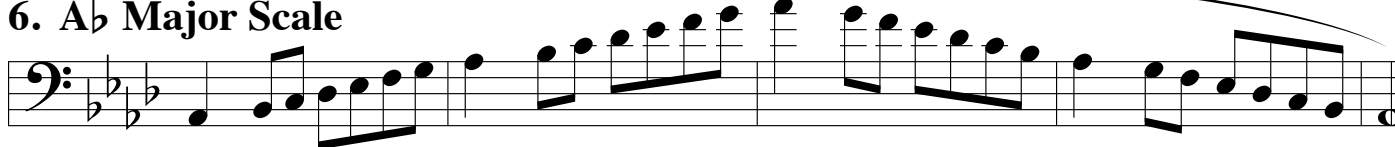
## 4. Bb Major Scale



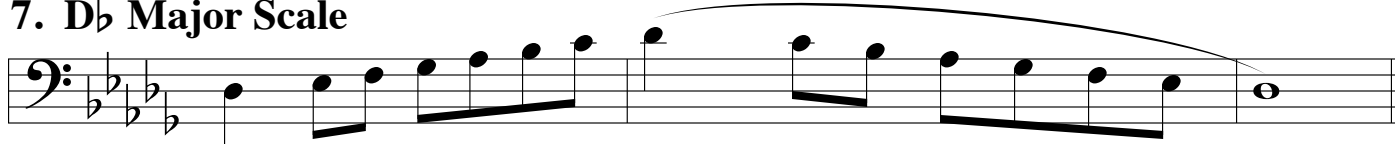
## 5. Eb Major Scale



## 6. Ab Major Scale



## 7. Db Major Scale



## 8. Chromatic Scale

